



## Borghi of Tuscany

### General information

Name of the village	<b>SAN GIMIGNANO</b>
Province	SIENA
Tourist information	<p><b>Proloco office</b> accessible only via 4 steps.                  Piazza del Duomo, 1 53037 San Gimignano (SI) Tel.: <a href="tel:+390577940008">+39 0577 940008</a> - Fax: +39 0577 940903 - Email: <a href="mailto:info@sangimignano.com">info@sangimignano.com</a></p> <p><b>Opening hours</b> from Monday to Sunday                  From March to October from 10 am to 1 pm and from 3 pm to 7 pm                  From November to February from 10 am to 1 pm and from 3 pm to 7 pm</p>



**TESTED BY:** [Handy Superabile Social Promotion Association](#) in 2024

**Please note** The following information refers to the date of verification shown at the bottom of each sheet. **The Association** is not responsible for any significant changes made by the property after the visit.

#### Summary

Villages of Tuscany.....	1
General information .....	1
Description.....	2
How to reach San Gimignano.....	2
Car park.....	4
Route from the car park to the entrance .....	6
Description of the itinerary .....	8
Communal toilets .....	21
Medical practices/healthcare facilities.....	23

Project carried out with the contribution of the





## Description

The historic center of San Gimignano, declared a **UNESCO World Heritage Site**, is famous for its medieval towers and today has **13 of them, although in the fourteenth century it is said that there were 72**, at least one for each wealthy family, who could thus show, through the construction of a tower, their economic power

On the ground floor there were the shops, on the first floor the bedrooms and, higher up, the kitchen



## How to reach San Gimignano

### By car

### From the North (Milan)

A1 Milan-Rome motorway southbound  
Exit FIRENZE IMPRUNETA  
Florence-Siena highway  
Exit POGGIBONSI NORD







	Follow the road signs for San Gimignano (Km.11) <b>From the South (Rome)</b> A1 Rome-Milan motorway northbound VALDICHIANA exit Follow the signs for Siena. In Siena, take the motorway junction towards Florence Exit POGGIBONSI NORD; follow the road signs for San Gimignano (Km.11)
<b>By plane</b>	Pisa Airport is 87 km away and Florence Airport is 64 km away
Assistance service for people with disabilities	YES
Embarkation/disembarkation of passengers with reduced mobility	with courtesy chair and ambulift /Finger
Tactile paths for the blind and visually impaired	YES
There is a toilet room accessible with grab handles	YES
<b>By train</b>	
Nearest station	Poggibonsi-San Gimignano train station 13 km away
Assistance service for people with disabilities	YES
Blue Hall Reference	Location Florence
Carriage access	with forklift/ramp but there is no tactile path from the entrance to the platforms
There is a toilet room in the station accessible with grab handles	YES
<b>By public and private transport</b>	
Nearest bus stop	Piazzetta Capassi and Piazzetta Buonaccorsi at 300 m while to reach the Poggibonsi station line 130 from Piazzale Montemaggio
Presence of adapted buses with ramp	It is recommended to contact Autolinee Toscane extra-urbano Siena to ask for





	confirmation and for the timetables <a href="https://www.at-bus.it/it">https://www.at-bus.it/it</a>
Presence of taxis with adapted ramp	NO

## Car park

Car park	
<b>Public parking</b> nearby	YES P1 Jubilee in via Lavagnini 1 km away , P2 in Piazzale Montemaggio 150 seats 400 meters away, P3 in via Bagnai 99 spaces at 550 m and P4 231 spaces in via Bagnai 500 meters from the historic center
Type of public parking floor	asphalt
Presence of parking space reserved for people with disabilities	6 parking spaces on P1, 4 parking spaces on P2, 3 parking spaces on P3 and 4 parking spaces on P4
Eventual notes	
 <p>Parking P1 Jubilee</p>	 <p>Parking P2 Montemaggio</p>





Parking P3 Bagnaia Superiore



Parking P4 Bagnaia inferiore



Elevator of the P3 Bagnaia Superiore car park



Elevator of the P3 Bagnaia Superiore car park

Notes

The P3 Bagnaia Superiore car park has a lift system that allows you to reach the upper point and reach Piazza del Duomo 500 meters away in an obstacle-free path





## Route from the car park to the entrance

Route from parking P2 to the starting point	On the flat or uphill/downhill with connected sidewalks
<b>Distance</b> from parking in Piazza del Duomo	SI P1 Giubileo in via Lavagnini at 1 km, P2 in Piazzale Montemaggio at 450 meters, P3 in via Bagnaia at 500 m (with elevator) and P4 231 spaces in via Bagnaia at 500 meters
<b>Type of trail surface</b>	At Sfalto smooth with a smooth surface
There are <b>indicators and tactile maps</b>	NO



Parking P2 Montemaggio



From the P2 car park towards the centre



Project promoted by



**Regione Toscana**



Towards Via S. Giovanni



Through the gate in Via S. Giovanni

Project carried out with the contribution of the



**Presidenza del  
Consiglio dei Ministri**  
Ministro per la disabilità



## Description of the itinerary



Length	2700 meters
--------	-------------

Project carried out with the contribution of the





Along the itinerary there are **maps and tactile signs** for the blind

NO



**San Gimignano** is a small village that can be visited in just two hours. The city center has two main streets: Via San Matteo and Via San Giovanni; and four pleasant squares: Piazza della Cisterna, Piazza del Duomo, Piazza Pecori and Piazza delle Erbe.

Our itinerary starts from the **Porta di San Giovanni**, which can be reached from the P2 Montemaggio car park after walking along Viale Roma with a wide well-connected sidewalk



Via San Giovanni is paved with rough concrete slabs with a regular surface, easily passable by a person in a wheelchair. At the beginning of the road we find the **Museum of Torture on the right, accessible via a 5 cm step and a subsequent half-cm door-knocker step. Ramp 150 cm wide, 150 cm long and slope 6.7%**

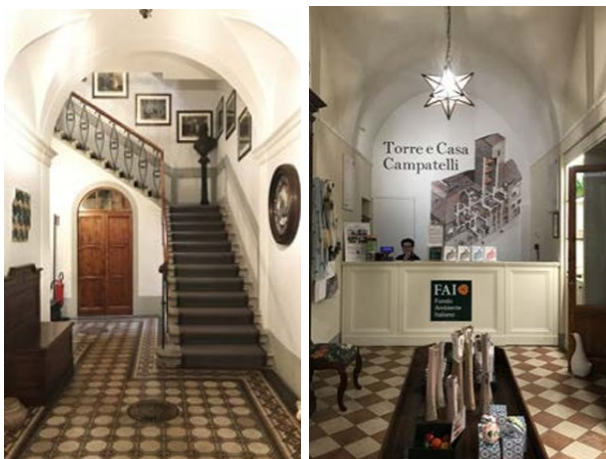
**The museum is not accessible to wheelchair users as it is spread over 2 floors, without an elevator**





Walking along Via San Giovanni we find the **Church of San Francesco on the right.**

The church originally consisted of a simple hall without an apse. After the eighteenth-century demolition, only the façade remained



Continuing along Via San Giovanni, after about 200 meters, just before the **Cuganes Tower**, we find the **Tower and Casa Campatelli** which **is not accessible, due to the presence of 1 step at the entrance, and the internal stairs that cannot be overcome in any way, the only ones that allow access to the 3 floors.** The eighteenth-century palace, with its 28-meter tower, is located in Via San Giovanni, and was erected in the mid-twelfth century, donated to the F.A.I. by the Campatelli family, an important Florentine entrepreneur of the 800s who made it their home





Continuing along Via San Giovanni, after a few meters we find the **Cugnanesi Tower** and in front of it a beautiful **image of the Madonna**, a place of worship.

Continuing, for 60 meters, you reach **Piazza della Cisterna** which takes its name from the well located in its center. It is surrounded by residences of the thirteenth and fourteenth centuries.

Some are Romanesque or Gothic houses, others look like fortresses such as the **Devil's Tower** (see photo below right) or the "Twin Towers"





From Piazza della Cisterna, take Via San Matteo for a short stretch until you reach **Piazza del Duomo**

Here the major city buildings and the tallest tower-houses of the city overlook: the Rognosa, which stands 52 meters next to the **Palazzo del Podestà**, and the **Torre Grossa**, symbol of municipal power, the tallest in San Gimignano with its 54 meters



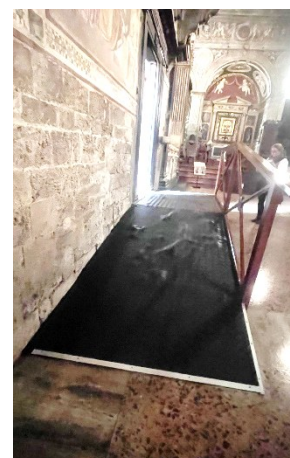
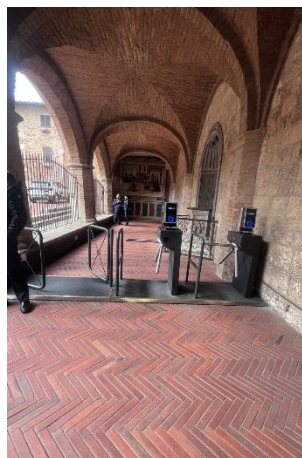


The **Palazzo Comunale**, also known as **Palazzo del Popolo** or **Palazzo Nuovo del Podestà**, built in the twelfth century, is located in Piazza del Duomo next to the Collegiate Church, and houses the "historical" headquarters of the **Civic Museums of San Gimignano** and the **Pinacoteca**. On the first floor is the **Council Chamber**. **The Palace has no elevators or ramps to facilitate access for people with reduced mobility.** Next to it is the **Collegiate Basilica of Santa Maria Assunta** also known as the **Cathedral of San Gimignano**.



The churchyard of the Duomo is accessible via a staircase that can be overcome via a steep ramp with steps, in bricks arranged in a herringbone pattern, interspersed with small steps and subsequent 2 steps while the main entrance of the Cathedral is accessible only via 6 steps. There is a secondary entrance, located on the left side of the Duomo reachable via 3 steps and a door with a useful width of more than 90 cm and an internal ramp equipped with a handrail.





**The collegiate basilica of Santa Maria Assunta** is the main Catholic place of worship. Erected perhaps in 1056 and certainly consecrated in 1148.

Along the right wall are the *Stories of the New Testament*, and on the left *Stories of the Old Testament*.

The transept hides two other treasures: the **polychrome wooden Crucifix** of 1200 and the **Chapel of Santa Fina**





After the staircase, on the left side of the Cathedral, in the Chaplains' Dormitory, there is the **Museum of Sacred Art** accessible through a wooden door with a width of more than 80 cm, which leads to the internal courtyard



The **Museum of Sacred Art** houses paintings, sculptures, bas-reliefs, illuminated manuscripts, fabrics and silverware that come from the churches and convents of the area on the two floors.

**The museum is inaccessible to wheelchair users as it lacks a lift and ramps.**

Cost of the Duomo + Chapel + Museum ticket: 7 € - free for people with disabilities





From Piazza del Duomo, to the left of the Chigi Tower, we enter Via San Matteo, with a pavement of rough concrete slabs, with a regular surface.

After about 115 meters, on the right, taking Via dei Marsili, after 20 meters on the right, in Via Capassi, we find **the toilets adapted for people with reduced mobility**. (see common services section).

We continue along Via San Matteo, for about 240 meters, until we reach the **Porta di San Matteo**



Turning just before **Porta San Matteo**, on the right, into Via Cellolese, and continuing for about 100 meters, you reach the **Romanesque-Gothic Church of Sant'Agostino** in the square of the same name.

It is the second largest church in the city and was built between 1280 and 1298, entirely of brick.





**The Church of Sant'Agostino is accessible via 5 steps that can be overcome with a ramp (slope of more than 10%) which is located on the left side**

The Church houses a collection of works of art with medieval and Renaissance frescoes depicting the story of St. Augustine. From the Church we then go straight towards Via G Marconi until the intersection with Via Folgore, where we turn left, and a few meters, at no.11 we find the **Museum Complex of Santa Chiara**



The complex is located in the ancient monastery built at the beginning of the sixteenth century, in the former conservatory of **Santa Chiara**, it is part of the Civic Museums of the city.

**The museum complex is accessible via an external ramp with a slope of 13%, and an internal ramp. To reach the lift, under the arch you have to overcome a short ramp 160 cm long, 96 cm wide and slope 7.6 %. Descent with a gradient of 2 to 7%.**

**Lift with call button h 106 cm, door width 89 cm, h internal buttons 1 06 cm and car width and depth 150 X 140 cm**





The **SANTA CHIARA MUSEUM COMPLEX** includes:

- **Archaeological Museum and the Via Francigena** (ground floor and first floor)
- **Apothecary of Santa Fina** (first floor)
- **Gallery of Modern and Contemporary Art** (second floor)



The **Archaeological Museum and the Via Francigena** preserves archaeological finds and other important cultural assets from the city and the surrounding area that illustrate the material history of San Gimignano from Prehistory to the early modern age. The **Museum** also documents the evolution of canteen and kitchen equipment and the variation of the relative production techniques, through ceramic and glass finds from the period between the Middle Ages and the Renaissance.



In the **Spezieria di Santa Fina** there is a collection of precious pharmacy jars of the fifteenth-eighteenth century, in ceramic and glass, which preserve some of the miraculous medicinal substances and balms whose recipe books were kept in ancient manuscripts. In addition, there are also furnishings and furnishings from the ancient health institutions of San Gimignano with samples of glass objects made between the sixteenth and eighteenth centuries. Rare and ancient medicines that were used as ingredients for healing treatments, such as scorpion oil and mandrake, are also on display





Once you leave the apothecary, it is impossible not to stop in the suggestive **Orto di Santa Fina**, used for the cultivation and study of herbs and flowers that once had both gastronomic and therapeutic use for the hospital itself.



From the S. Chiara museum complex, continuing along Via Folgore, for 230 meters, we reach the **Templar Church of S. Jacopo** which was a place of worship but also a refuge for pilgrims who traveled along the Via Francigena. In 1637 the property passed to the nuns who had this overpass built that led to their nearby convent of S. Girolamo. In the architrave, on which the monolithic lunette rests, a cross of the Templar Order is carved in relief.

**Accessible via a small step.**



From **the Church of S. Jacopo** proceed along the Bigazzino locality, for 170 meters, on a small gravel surface that is quite passable even in a wheelchair. At the junction with Via delle Fonti, turn left until you reach the ancient **medieval fountains of San Gimignano**, a true architectural masterpiece, 50 meters away. Protected by stone arches, the four central Romanesque-style basins date back to the twelfth century, while the two largest, also in Romanesque style, can be dated to the following century. The remaining four, with their splendid Gothic-style pointed arches, date back to the fourteenth century.





From the Medieval Fountains, go back, for 70 meters, passing the Porta delle Fonti, and turn left into Via S. Stefano, following it for 200 meters, along the old Walls, until you reach the **Church of San Lorenzo in Ponte** at the intersection with Via del Castello.



The **Church of San Lorenzo in Ponte** is accessible on the plain.

It is one of the oldest churches in the village and is so called because it stood near a drawbridge that once allowed you to reach Piazza della Cisterna from the ancient Castle of the bishop of Volterra

It is a small Romanesque style church, built in the thirteenth century





From the Church of San Lorenzo in Ponte continue for 60 meters in via S. Stefano and then you can turn right into via Piandornella along the **Old Walls**, until you reach, after 290 meters, via San Giovanni. Turn left into Via San Giovanni, and you will reach Porta San Giovanni, 140 meters away. The first city wall dates back to 998 and measured 1108 m and between the 15th and 15th centuries 5 large bastions were built to defend the city



Alternatively, from the Church of San Lorenzo in Ponte, continue for 60 meters in via S. Stefano and then you can turn right into via

### Communal toilets

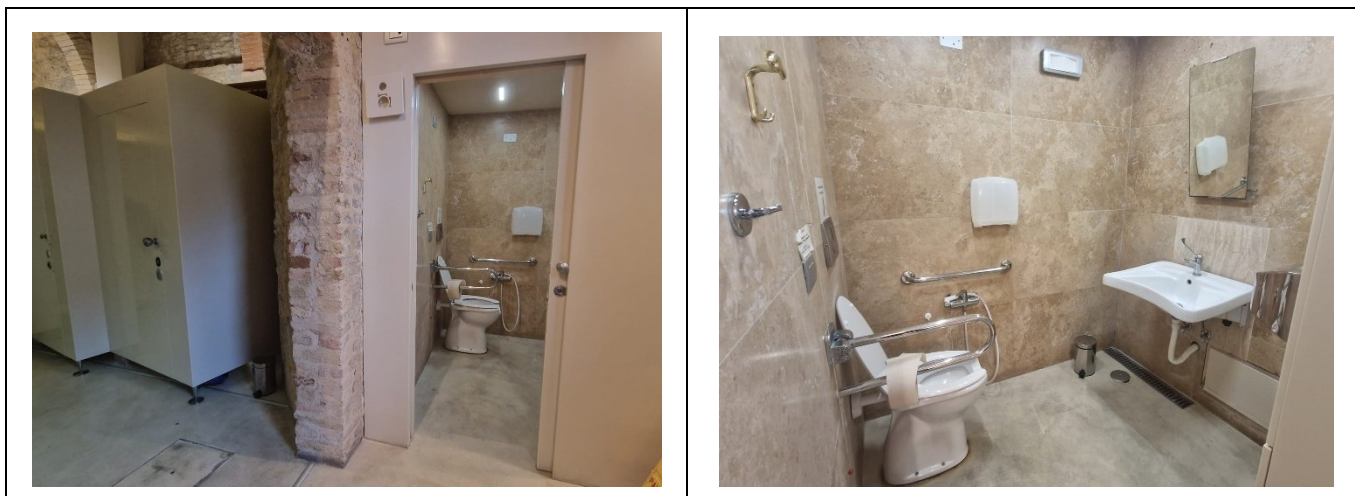
There is an accessible toilet	Yes
Location of the toilet room	In Via Capassi, corner with Via dei Marsili 130 meters from the Duomo
<b>How to access</b> the premises	reachable via a ramp at the entrance with a slope of 6.2%, door knocker step of 1 and a half cm. Call bell at 127 cm.





Usable <b>width of the entrance door</b>	External door above 90 cm and internal 72 cm
Type of door	External door and internal sliding
Type of <b>handle</b>	Automatic/Sliding
Toilet height	50 cm
<b>Toilet seat</b> with open front tooth	YES
<b>Support handles</b>	Reclining grab bar on the right and fixed wall grab bar on the left
<b>Flexible shower on the side of the toilet</b>	NO
<b>Free space</b> on the sides of the toilet	left greater than 25 Cm right 90 cm frontal Above 90 cm
<b>Electric doorbell/telephone</b> on the side of the toilet	YES
<b>Washbasin</b> with space underneath for wheelchair approach	78 cm
Height from the ground lower edge <b>mirror</b>	135 cm with tilted mirror
<b>Baby changing table</b>	NO
Eventual notes	





### Medical practices/healthcare facilities

Hospitals near the property	<b>Azienda Ospedaliera Universitaria Senese</b> V.le Bracci - Loc.le Scotte, 53100, Siena (SI), 35 km from the city centre
Other healthcare facilities	<b>Socio-Health District</b> , Presidio Santa Fina, Via Folgore tel. +39 0577 767676

TESTED BY: [Handy Superabile Social Promotion Association](#) in 2024

